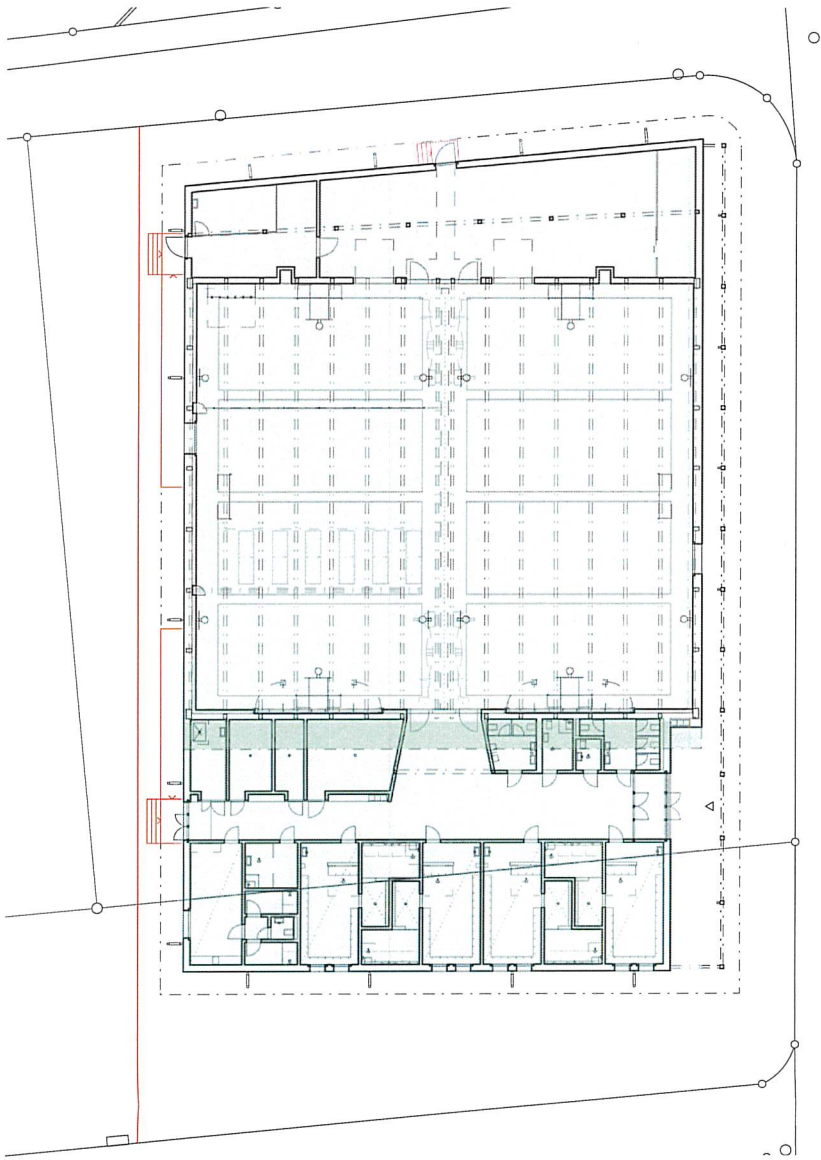





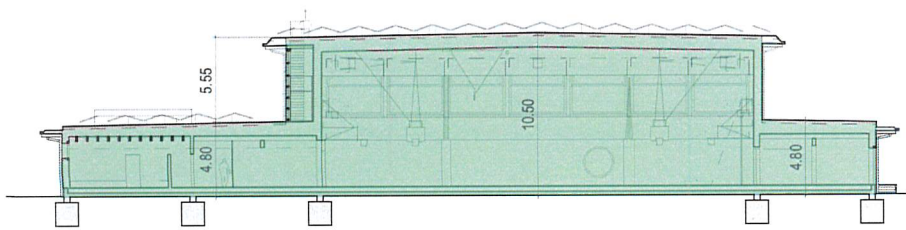






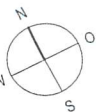
EINGANG
16. März 2026
Planung und Bau
Oberentfelden



	GF Geräteräume	254	m ²
	GF Turnhalle	1'001	m ²
	GF Technik N1	61	m ²
	GF Garderoben	527	m ²
	<u>Geschossfläche (GF)</u>	<u>1'843</u>	<u>m²</u>



	GV Geräteräume	254m ² x 4.80m	= 1'219	m ³
	GV Turnhalle + Technik N1	1'001m ² x 10.50m 61m ² x 5.55m	= 10'511 = 339	m ³ m ³
	GV Garderoben	527m ² x 4.80m	= 2'530	m ³
	<u>Gebäudevolumen (GV)</u>		<u>= 14'599</u>	<u>m³</u>



BAUGESUCH

±0.00 = 412.60 müM



**Departement Finanzen und Ressourcen
Immobilien Aargau**

Tellstrasse 67, Postfach 2531, 5001 Aarau
Tel. 062 835 35 00 Fax. 062 835 35 09

AOID	Übergangslösung Sporthallen BFGS, Erlenweg 5036 Oberentfelden	MST 1:1000
Plan-Nr: A_BP_902	Berechnungen Gebäudevolumen nach SIA 416	Plangrösse A3
Datum: 03.03.2026	Ersteller: (SSP), Kim Strebel Architekten GmbH, Rain 18, 5000 Aarau	
Rev. Datum:	Rev. Ersteller:	